



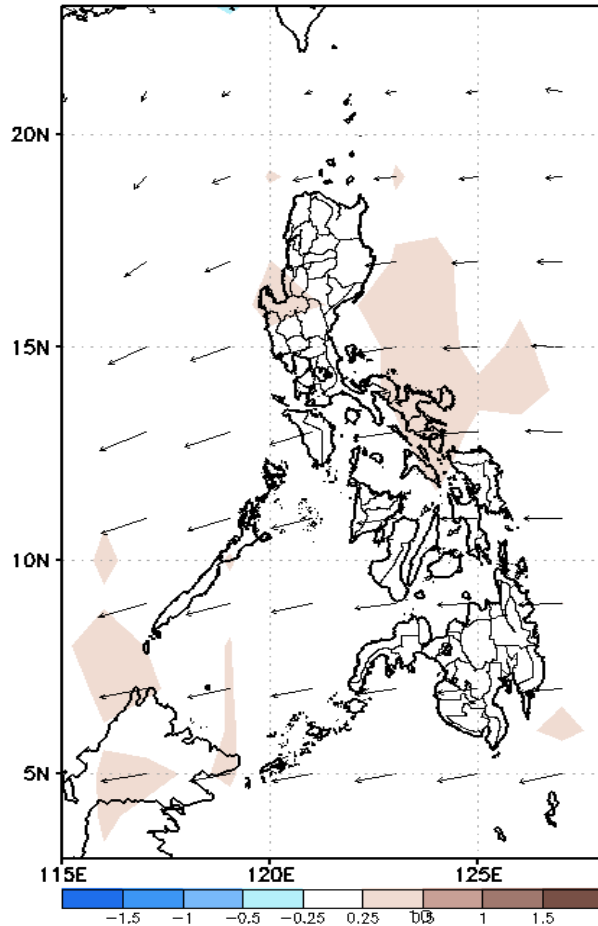
Week 1 & Week 2 Forecast for the Philippines using GEFS Model



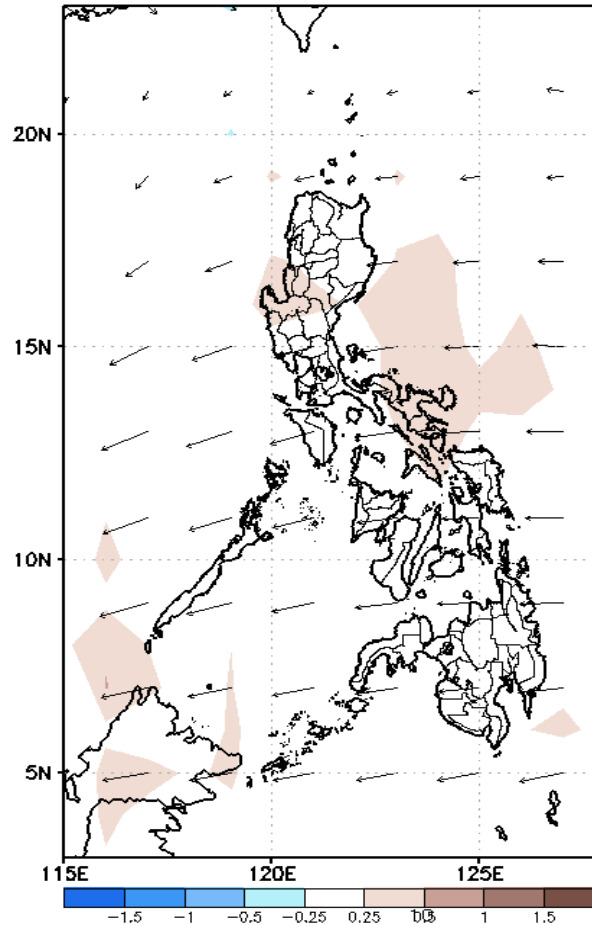
GEFS Week-1 Forecasts: Divergence & Wind Anomaly

Week 1: Aug 16-22, 2021

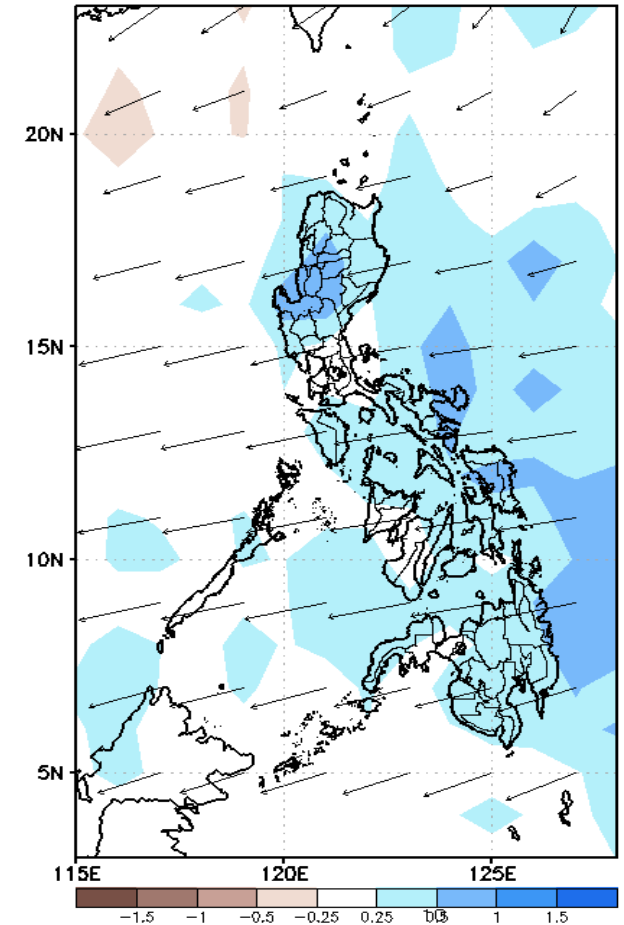
GEFS Week-1 850-hPa Divergence and Wind Anomom
Valid: 20210816 - 20210822



GEFS Week-1 700-hPa Divergence and Wind Anomom
Valid: 20210816 - 20210822



GEFS Week-1 200-hPa Divergence and Wind Anomom
Valid: 20210816 - 20210822

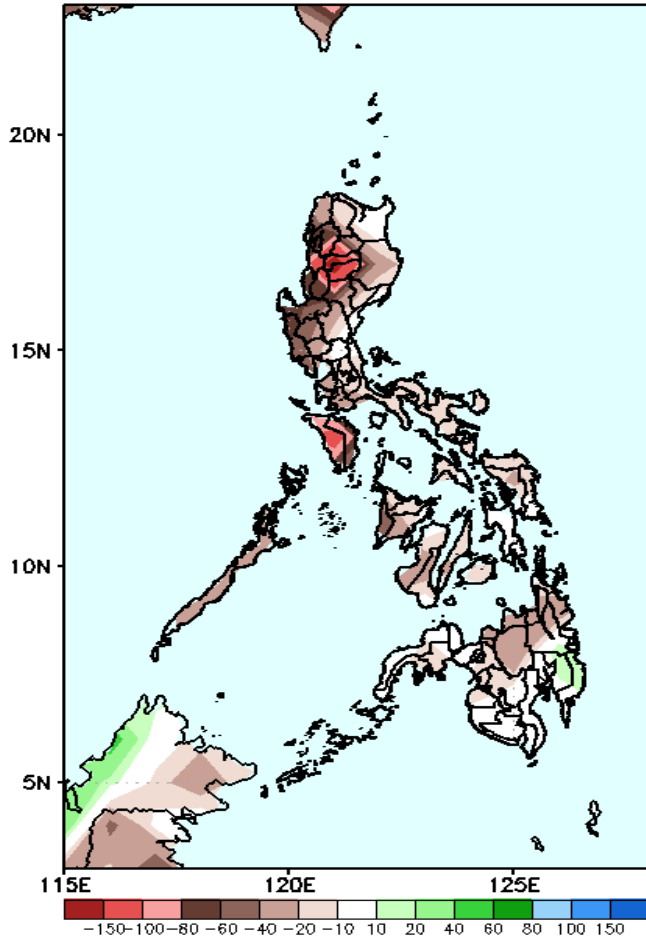


Upper and low level Divergence suggest likelihood of light precipitation in most parts of the country. Easterlies affecting most parts of the country. Attributing to light to moderate rains due to thunderstorms during the forecast period.

Precipitation Anomaly and Exceedance Probability > 25/50 mm

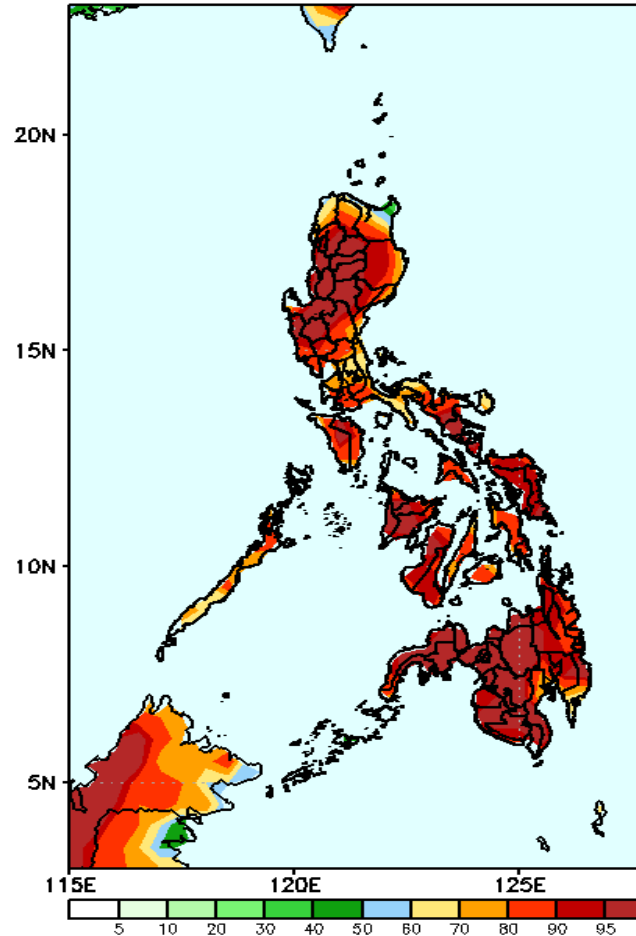
Week 1: Aug 16-22, 2021

GEFS Week-1 Precip Anomaly
Valid: 20210816 - 20210822



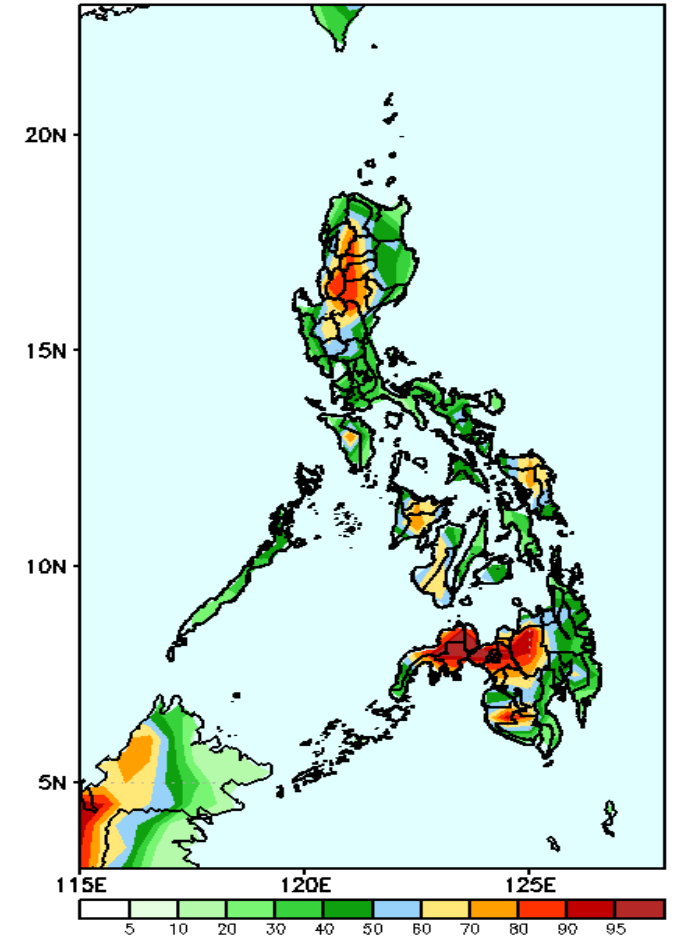
Rainfall deficit of 40-150mm is expected in most parts of the country (especially in Cordillera Region & Mindoro) during the forecast period.

GEFS Week-1 Exceedance Prob. > 25mm
Valid: 20210816 - 20210822



High probability of rainfall to exceed 25mm in most parts of the country is expected during the forecast period.

GEFS Week-1 Exceedance Prob. > 50mm
Valid: 20210816 - 20210822

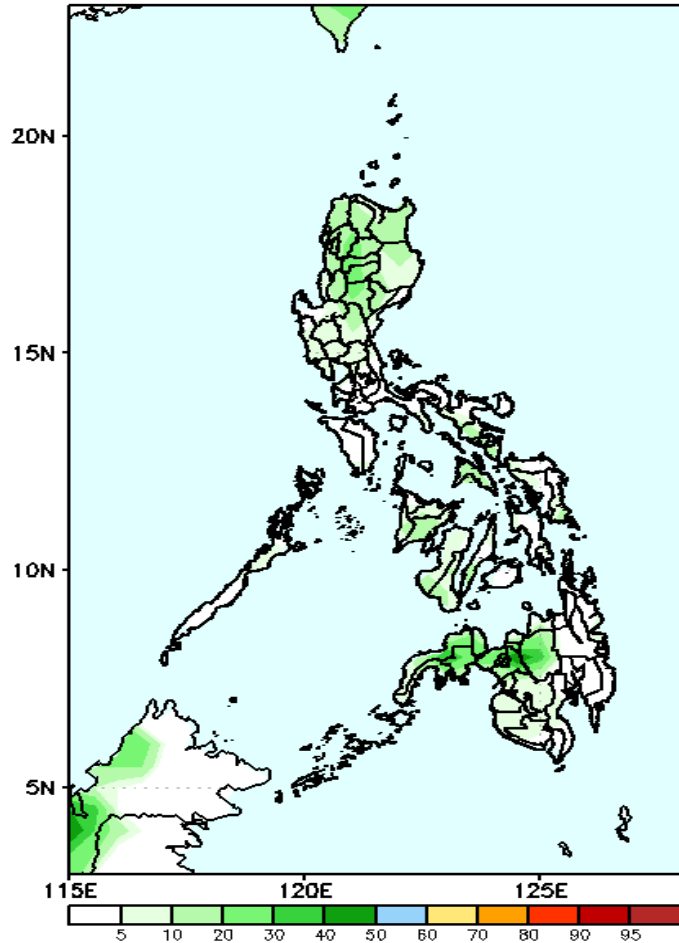


High probability of rainfall to exceed 50mm in most parts of Cordillera Region, Nueva Viscaya, Occ. Mindoro, Capiz, Iloilo, Northern Mindanao and Zamboanga Peninsula while less likely for the rest of the country during the forecast period.

Exceedance Probability > 100/150/200 mm

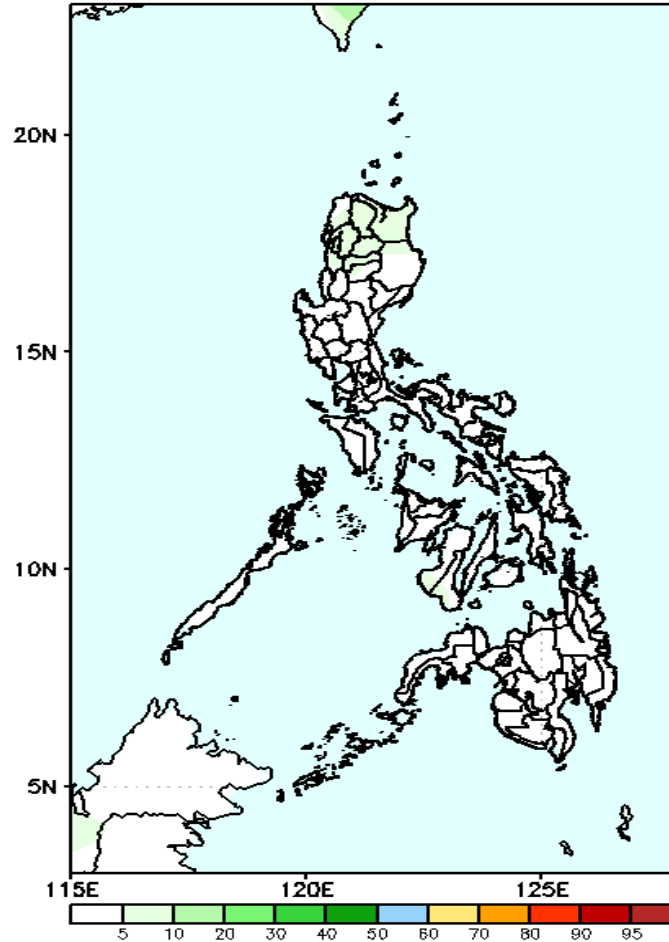
Week 1: Aug 16-22, 2021

GEFS Week-1 Exceedance Prob. > 100mm
Valid: 20210816 - 20210822



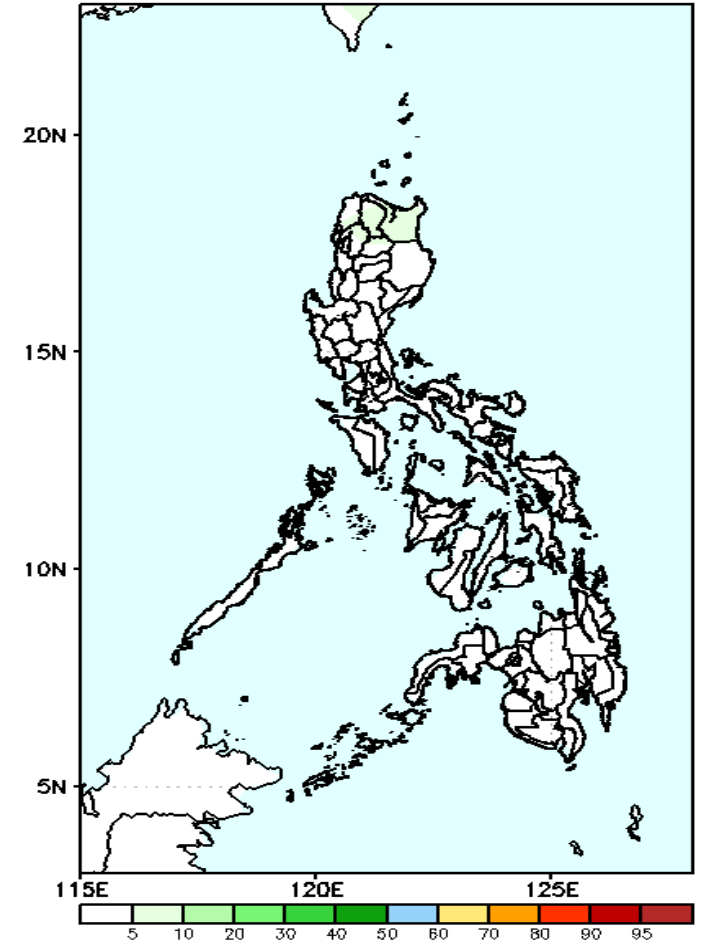
Less probability of rainfall to exceed 100mm in most parts of the country is expected during the forecast period.

GEFS Week-1 Exceedance Prob. > 150mm
Valid: 20210816 - 20210822



Less probability of rainfall to exceed 150mm in most parts of the country is expected during the forecast period.

GEFS Week-1 Exceedance Prob. > 200mm
Valid: 20210816 - 20210822



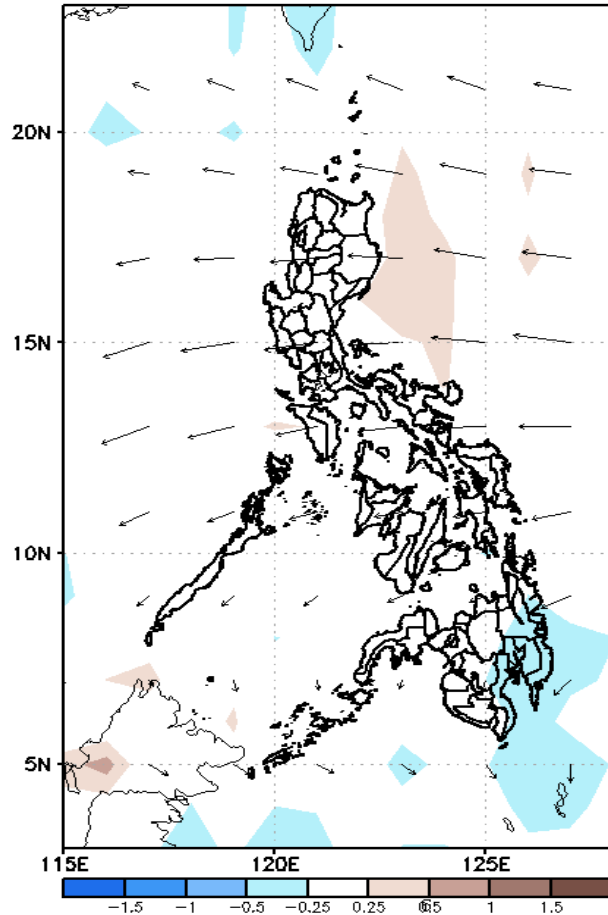
Less probability of rainfall to exceed 200mm in most parts of the country is expected during the forecast period.



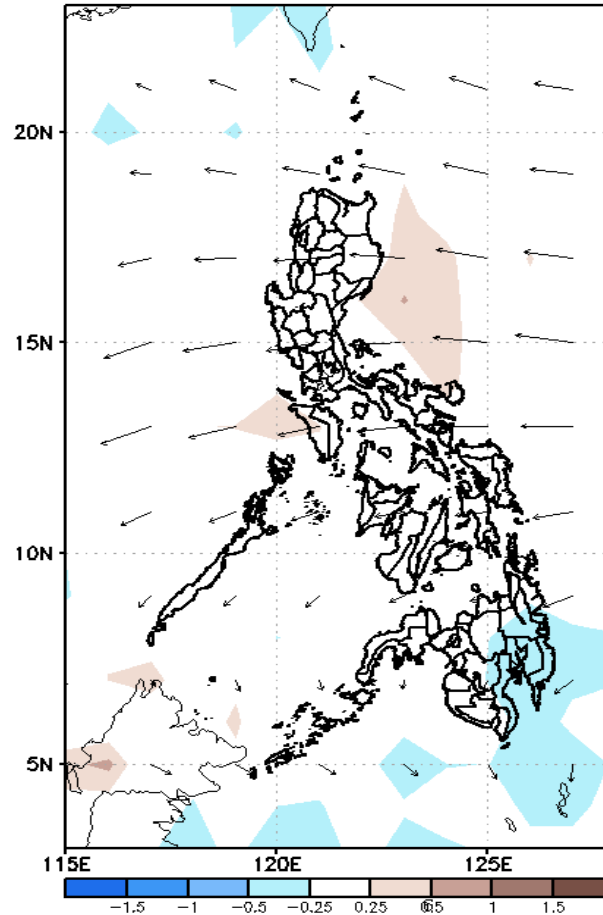
GEFS Week-2 Forecasts: Divergence & Wind Anomaly

Week 2: Aug 23-29, 2021

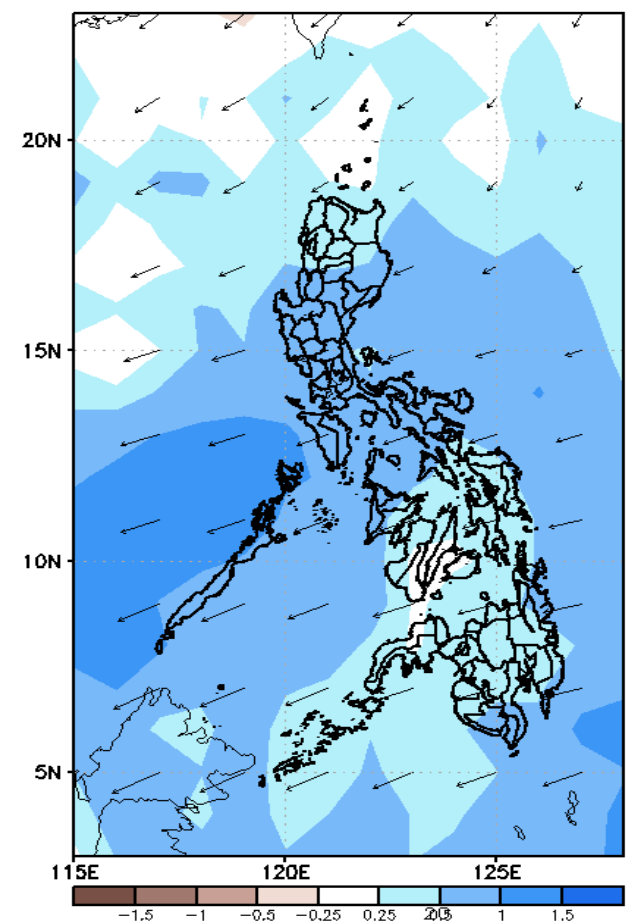
GEFS Week-2 850-hPa Divergence and Wind Anom
Valid: 20210823 - 20210829



GEFS Week-2 700-hPa Divergence and Wind Anom
Valid: 20210823 - 20210829



GEFS week-2 200-hPa Divergence and Wind Anom
Valid: 20210823 - 20210829



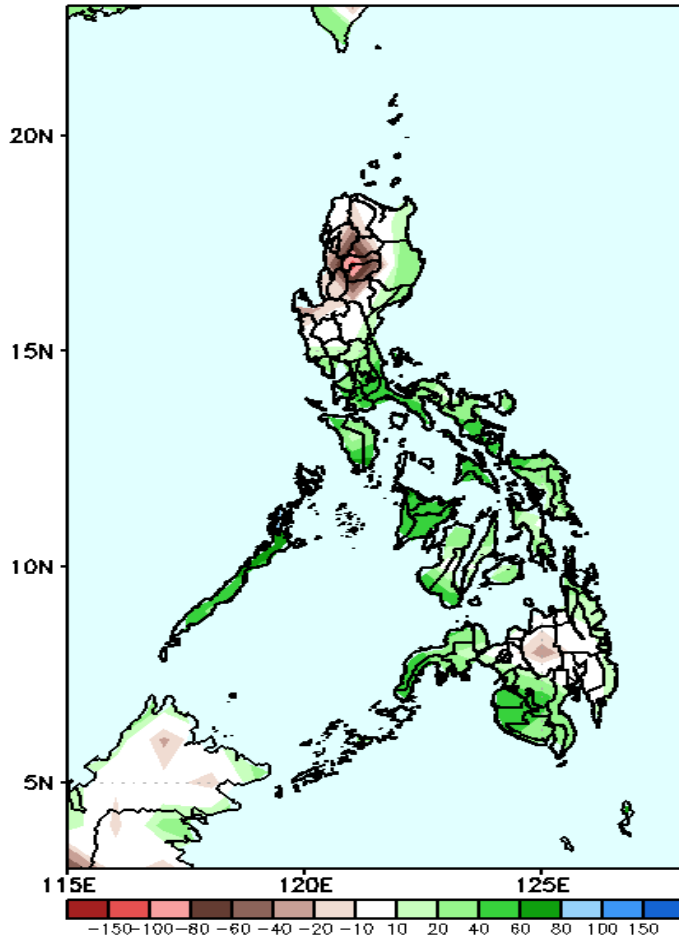
Upper and low level Divergence suggest likelihood of moderate to heavy precipitation most parts of the country. Southwest monsoon affecting some parts of the Western Luzon and Visayas. Easterlies affecting most parts of the country. Attributing to light to moderate rains due to thunderstorms during the forecast period.



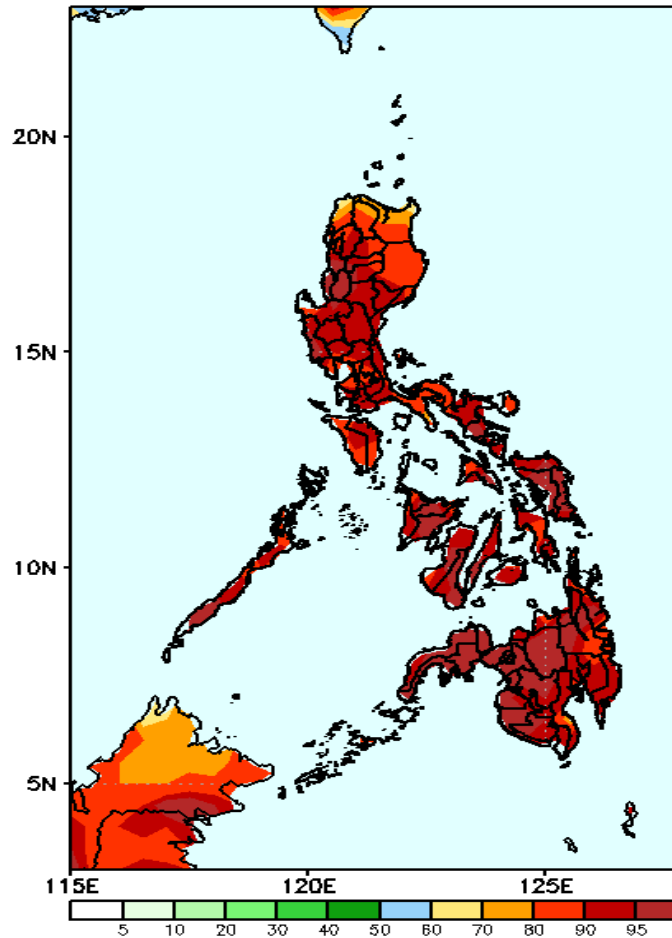
Precipitation Anomaly and Exceedance Probability > 25/50 mm

Week 2: Aug 23-29, 2021

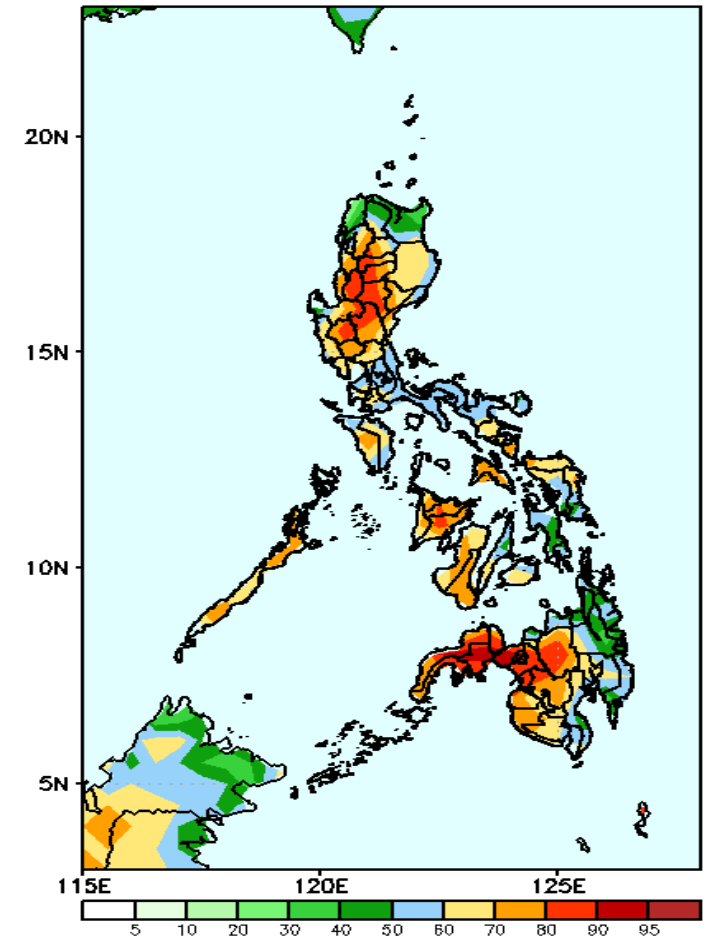
GEFS Week-2 Precip Anomaly
Valid: 20210823 - 20210829



GEFS Week-2 Exceedance Prob. > 25mm
Valid: 20210823 - 20210829



GEFS Week-2 Exceedance Prob. > 50mm
Valid: 20210823 - 20210829



Increase of rainfall of 40-50mm is expected in most parts of eastern and southern Luzon, Visayas and western Mindanao while rainfall deficit of 40-100mm in Cordillera & Ilocos Region during the forecast period.

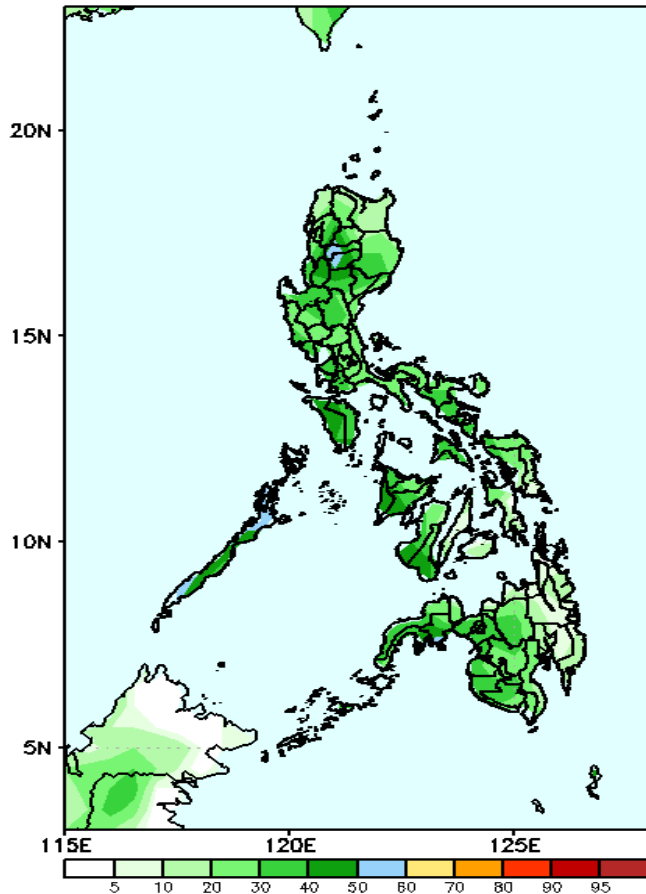
High probability of rainfall to exceed 25mm in most parts of the country is expected during the forecast period

High probability of rainfall to exceed 50mm in most parts of the country is expected except in the provinces of Ilocos Norte, Apayao, Cagayan, Leyte, Cebu and eastern Mindanao during the forecast period.

Exceedance Probability > 100/150/200 mm

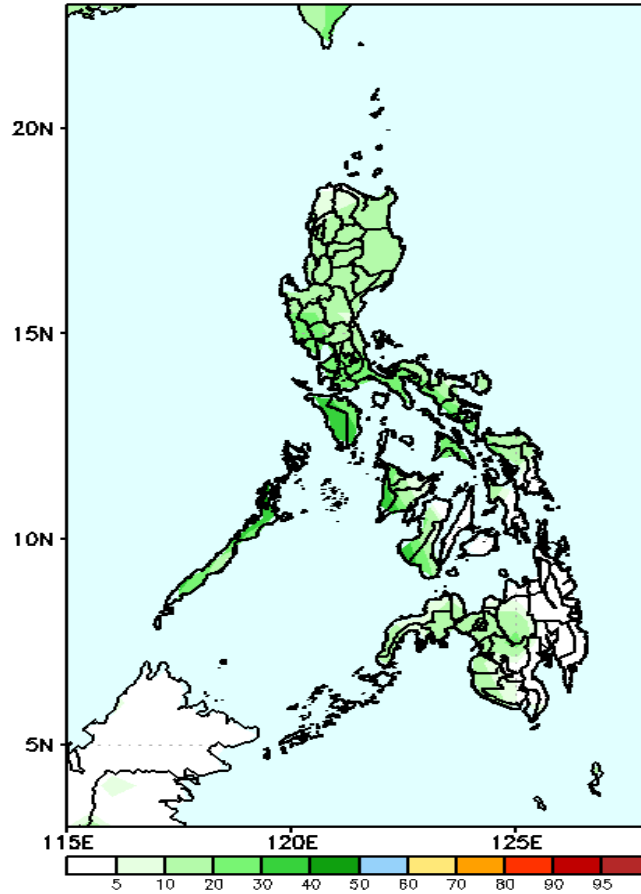
Week 2: Aug 23-29, 2021

GEFS Week-2 Exceedance Prob. > 100mm
Valid: 20210823 - 20210829



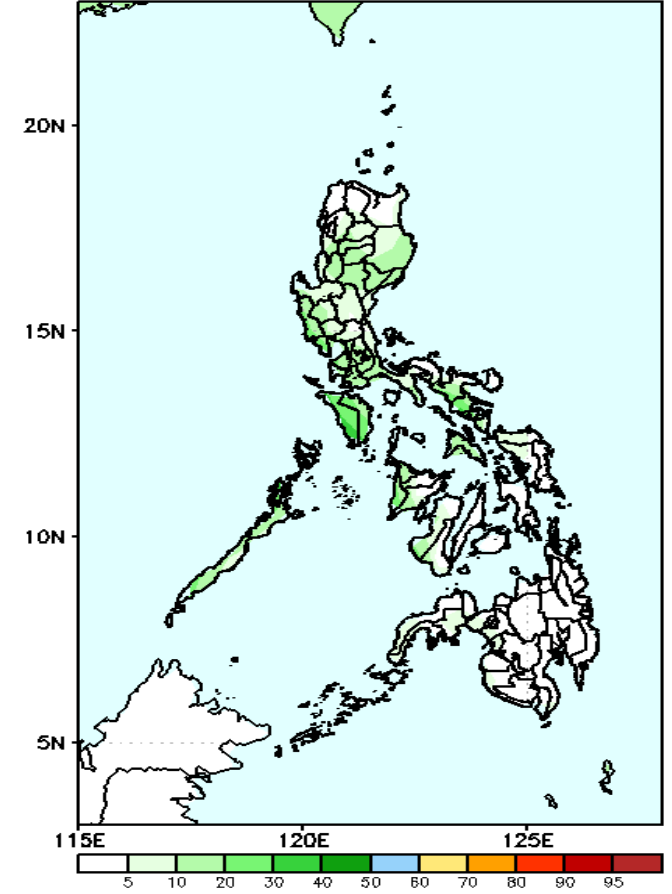
Less probability of rainfall to exceed 100mm in most parts of the country is expected during the forecast period.

GEFS Week-2 Exceedance Prob. > 150mm
Valid: 20210823 - 20210829



Less probability of rainfall to exceed 150mm in most parts of the country is expected during the forecast period.

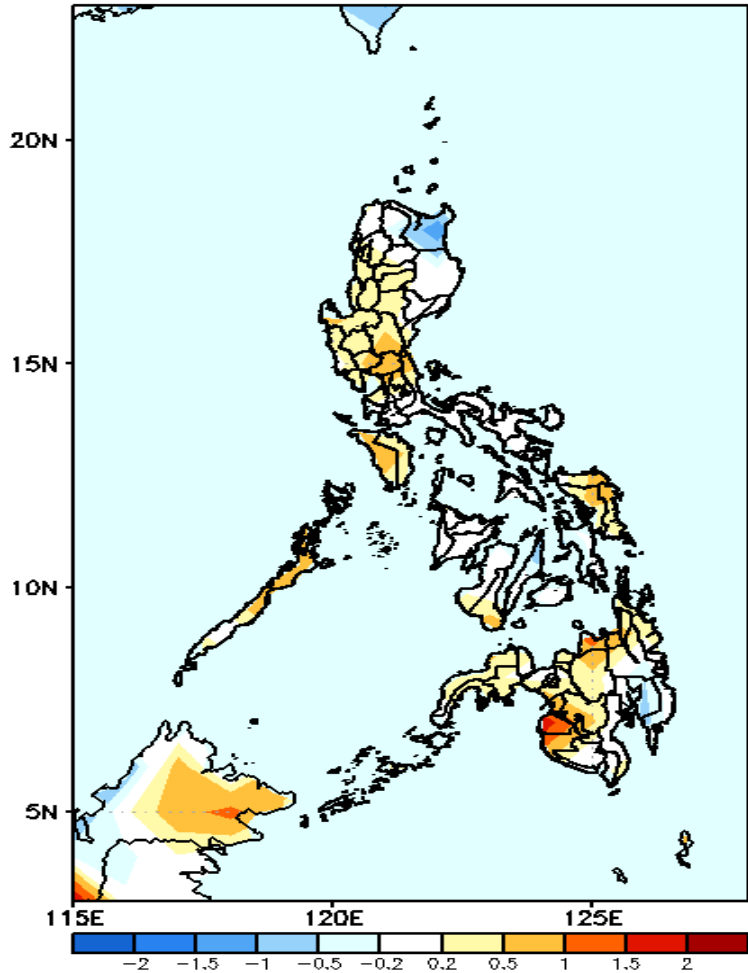
GEFS Week-2 Exceedance Prob. > 200mm
Valid: 20210823 - 20210829



Less probability of rainfall to exceed 200mm in most parts of the country is expected during the forecast period.

GEFS Week-1 & 2 Forecasts: T2m Anomaly

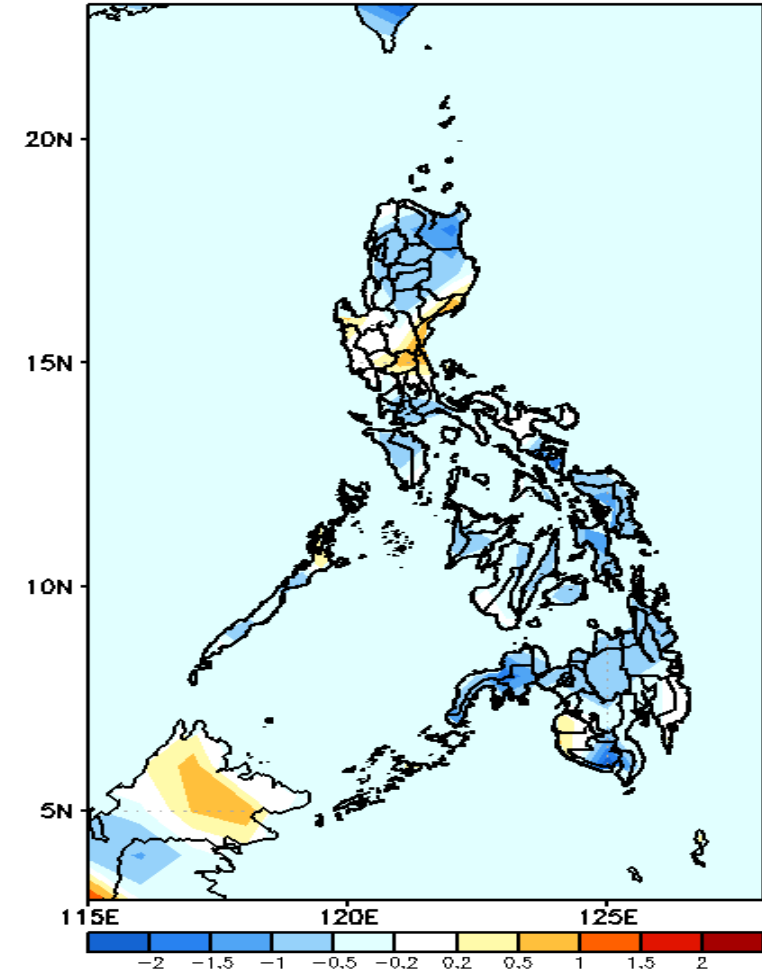
GEFS Week-1 T2m Anomaly
Valid: 20210816 - 20210822



2m Temperature Week 1: Aug 16-22, 2021

Average to slightly warmer average surface air temperature will likely experience in most parts of the country is expected while cooler than average temperature in Cagayan is expected during the forecast period.

GEFS Week-2 T2m Anomaly
Valid: 20210823 - 20210829



2m Temperature Week 2: Aug 23-29, 2021

Slightly cooler to cooler than average surface air temperature will likely experience in most parts of the country except in the provinces of Aurora and Bulacan where slightly warmer than average surface temperature is expected during the forecast period.